



This original 1963 bathroom was everything the new owners did not want. We provided a new perpendicular layout and delighted them many features. A 6 ft. double shower. A new transom window for outside light. We made grand elements inside a standard 8 ft. ceiling with a 5 ft. wide shower niche, tall corner utility cabinetry, floor to ceiling porcelain tile walls, and heated floor. Private yet accessible 36" pocket door with magnetic ADA closer. A floating double vanity with motion sensor light at the floor. Aging in style grab bars and shower valves at the door opening. Modern lines throughout.



SHEET
NUMBER
1

RESIDENTIAL BATHROOM 2023

\$ 50,000 - \$ 100,000



PROJECT
STATEMENT



Solution: "A Spa like feeling"

- Motion sensed lighting



RESIDENTIAL BATHROOM 2023



\$ 50,000 - \$ 100,000

"A SPA LIKE FEELING"

Clients desires:

- Larger bathroom
- Create the bathroom around a specific tile, it was a must :) 

- Privacy door for entrance
- Universal design elements
- A Spa like feeling, so they can “age in style”
- Larger shower with double shower heads
- Easy clean shower
- Dual sinks
- New toilet
- New heated flooring
- Sensor lighting
- Under cabinet light for night way finding

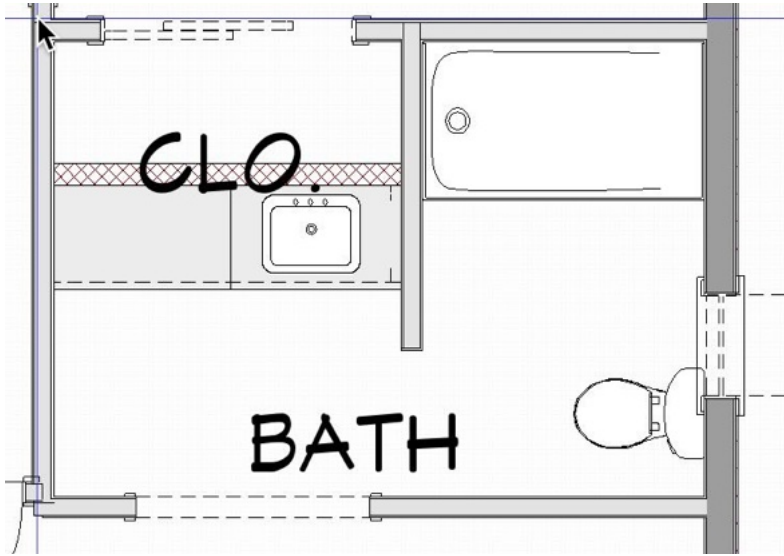
As Built:

- No door/privacy
- Dark
- Small



As Built: One sink

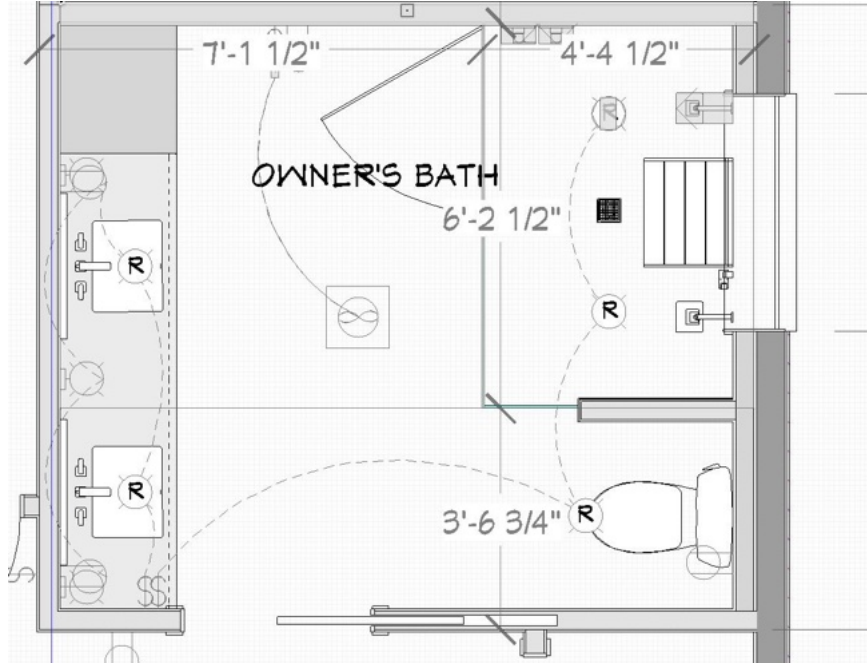




As built



New plan



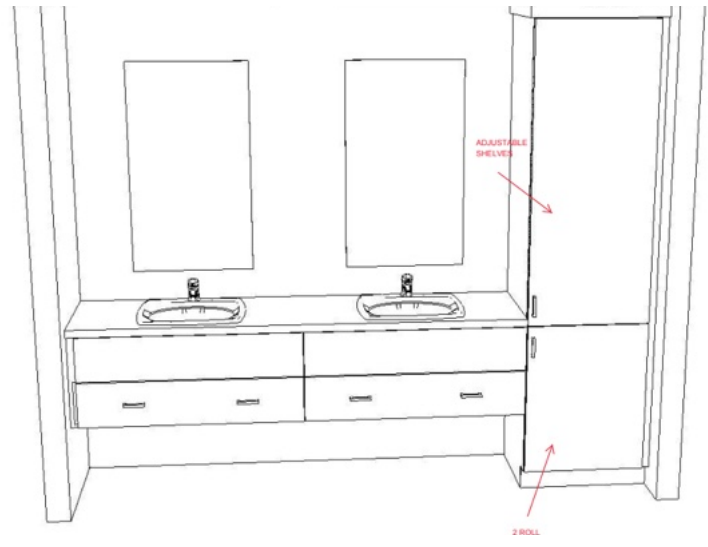
SHEET
NUMBER
4

RESIDENTIAL BATHROOM 2023

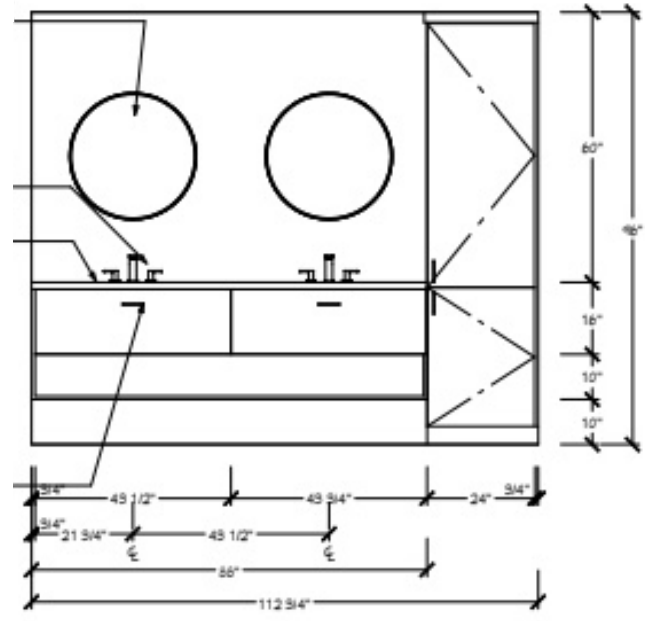
\$ 50,000 - \$ 100,000



FLOOR PLANS



Drawings



OWNER'S BATH ELEVATION
SCALE: 1/2"=1'-0"



- Solution:** Enlarge space
- Remove the adjacent walls on both sides to expand into the adjacent spaces
 - Remove windows

Solution:

- Remove shower wall
- Remove bedroom wall
- Remove windows

Solution:

- Remove shower wall
- Remove window



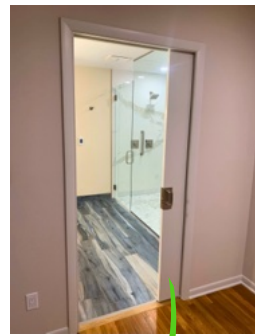


As built



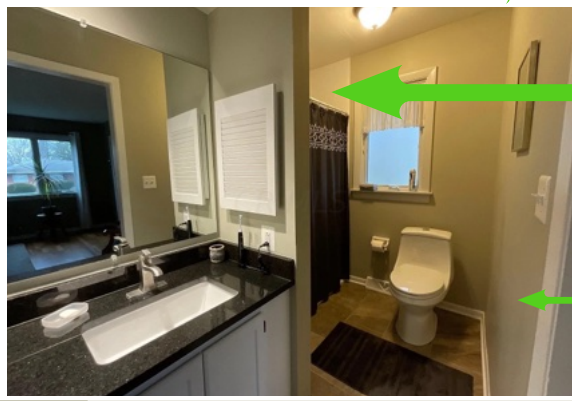
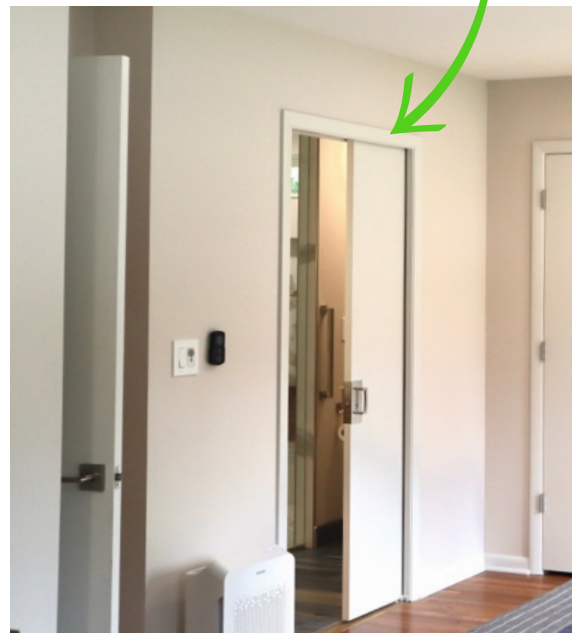
Solution: Cavity
Door Slider

- Enlarge wall opening to accomodate sliding door



Solution:

- Open into both sides of adjacent spaces



Solution:

- back side of as built shower wall
- bedroom side of as built

Solution: “Age in Style“

Solution: Universal design elements

- Place shower valve near door
- 32" shower door
- 36" Sliding entry door with **ADA magnetic handle**
- Easy access

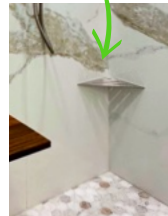


Shower



Solution:

- Poreclian Panels - easy clean
- Double shower heads
- Hand held on slider
- Transom Window for natural light
- Large shampoo niche
- Teak flip up seat -(Universal design elements)
- Grab bars
- Two foot steps (one in ea. corner) to rest foot on for shaving legs



SHEET
NUMBER
9

RESIDENTIAL BATHROOM 2023

\$ 50,000 - \$ 100,000



DETAILS: SHOWER
1. EXCEPTIONAL
CONSIDERATIONS
2. NATURAL LIGHT



Solution: "Age in Style"

Solution: Universal design elements

- Curbless shower



Sink Area

Solution:

- Linen closet



Solution:

- Double sinks
- Faucets wall mounted



SHEET
NUMBER
11

RESIDENTIAL BATHROOM 2023

\$ 50,000 - \$ 100,000



ROOM DETAILS:

1. SINK AREA
2. FAUCETS

Solution:

- Heated flooring
- New exhaust fan with bacteria killing light



Solution: "Spa like feel"

- Wave tile for texture, coordinates with flooring pattern

Solution:

- Motion sensed lighting
- Under vanity & room entrance



Solution:

- Cut away cabinetry

RESIDENTIAL BATHROOM 2023

\$ 50,000 - \$ 100,000



DETAILS: SPA FEELING
1. BAMBOO CABINETS
2. FLOORING
3. VANITY



Solution:

- Privacy Door



RESIDENTIAL BATHROOM 2023

\$ 50,000 - \$ 100,000



1. NEW TOILET
2. PRIVACY DOOR



SHEET
NUMBER
15

RESIDENTIAL BATHROOM 2023

\$ 50,000 - \$ 100,000



COMPLETED OWNER'S
BAMBOO BATHROOM

CLIENTS COMMENTS

Our bathroom remodel turned out even better than we could have imagined!

We now have the bath of our dreams.

- **It feels like a 5star spa.**
- **The selection of materials such as porcelain tile, modern fixtures and bamboo cabinetry create a special space.**
- **The quality of the design and workmanship are truly exceptional.**

We absolutely love getting ready for the day in our gorgeous bathroom.

RESIDENTIAL BATHROOM 2023

\$ 50,000 - \$ 100,000



CLIENTS COMMENTS